

CLASS XII - CBSE

Time Allowed : 2 Hour

ENGLISH

Maximum Marks : 40

General Instructions:

1. The Question Paper contains **THREE sections-READING, WRITING and LITERATURE.**
2. Attempt questions based on specific instructions for each part.

HAVE CONTROL → HAVE PATIENCE → HAVE CONFIDENCE ⇒ 100% SUCCESS

SECTION A – READING (14 marks)

1. Read the following passage carefully :

[1 × 8 = 8]

1. It is worth looking at one or two aspects of the way a mother behaves towards her baby. The usual following cuddling and cleaning require little comment but the position in which she usually holds the baby against her body is rather revealing. Central American studies have disclosed the fact that about 80 percent of mothers cradle their infants in their left arms holding them against the left side of their bodies. If asked to explain the significance of this preference most people reply that it is obviously the result of the predominance of right handedness in the population. By holding the babies in their left arms the mothers keep their dominant arm free for manipulations. But a detailed analysis shows that this is not the case. True there is a slight difference between right handed and left handed mothers but not enough to provide an adequate explanation. It emerges that 83 percent of right handed mothers hold the baby on the left side but then so do 78 percent of left handed mothers. In other words only 22 percent of left handed mothers have their dominant hand free for actions. Clearly there must be some other less obvious explanation.
2. The only other clue comes from the fact that the heart is on the left side of the mother's body. Could it be that the sound of her heartbeat is the vital factor? And in what way? Thinking along these lines it was argued that perhaps during its existence inside the body of the mother the growing embryo becomes fixed on the sound of the heartbeat. If this is so then the rediscovery of this familiar sound after birth might have a calming effect on the infant especially as it has just been thrust into a strange and frighteningly new world outside. If this is so then the mother either instinctively or by an unconscious series of trials and errors would soon arrive at the discovery that her baby is more at peace if held on the left against on her heart than on the right.
3. This may sound far-fetched, but tests have now been carried out which reveal that it is nevertheless the true explanation. Groups of new-born babies in a hospital nursery were exposed for a considerable time to the recorded sound of a heartbeat at a standard rate of 72 beats per minute. There were nine babies in each group and it was found that one or more of them was crying for 60 per cent of the time when the sound was not switched on, but that this figure fell to only 38 per cent when the heartbeat recording was thumping away. The heartbeat groups also showed a greater weight-gain than the others, although the amount of food taken was the same in both cases. Clearly the beatless groups were burning up a lot more energy as a result of the vigorous actions of their crying.
4. Another test was done with slightly older infants at bedtime. In some groups the room was silent, in others recorded lullabies were played. In others a ticking metronome was operating at the heartbeat speed of 72 beats per minute. In still others the heartbeat recording itself was played. It was then checked to see which groups fell asleep more quickly. The heartbeat group dropped off in half the time it took for any of the other groups. This not only clinches the idea that the sound of the heart beating is a powerfully calming stimulus, but it also shows that the response is a highly specific one. The metronome imitation will not do - at least, not for young infants.

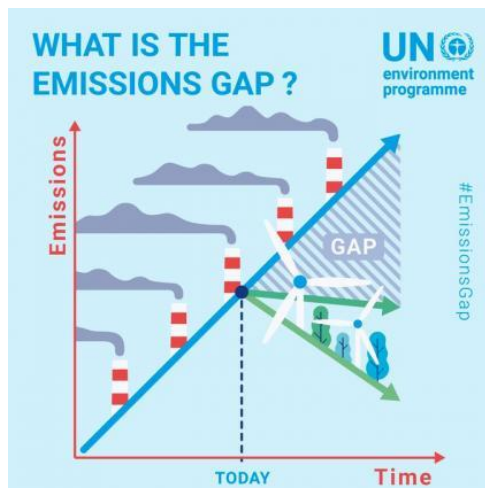
5. So it seems fairly certain that this is the explanation of the mother's left-side approach to baby-holding. It is interesting that when 466 Madonna and child paintings (dating back over several hundred years) were analysed for this feature, 373 of them showed the baby on the left breast. Here again the figure was at the 80 per cent level. This contrasts with observations of females carrying parcels, where it was found that 50 per cent carried them on the left and 50 percent on the right.

Based on your understanding of the passage, answer ANY EIGHT questions from the nine given below.

- (i) What is the most significant thing about the way most mothers hold their babies? [1]
- (ii) How can you say that mothers don't hold babies on the left side of their bodies with the sole purpose of keeping their right arm free for work? [1]
- (iii) What has a calming effect on an infant and why? [1]
- (iv) Why does the baby feel more at peace against the left side of the mother's body? [1]
- (v) What fact is proved by the paintings of Madonna and Child? [1]
- (vi) What does the observations unfold about the females carrying parcels ? [1]
- (vii) What has the Careful American significantly studied about women? [1]
- (viii) Why were the beatless groups burning a lot more energy? [1]
- (ix) Find the antonym of the word 'vigorous' from paragraph 3? [1]

2. Read the following passage carefully. [1 × 6 = 6]

1. Greenhouse gas emissions reached a new high last year, putting the world on track for an average temperature rise of 3 degrees Celsius, a UN report showed on Wednesday, the 10th of December, 2020. The report by the United Nations Environment Programme (UNEP) - the latest to suggest the world is hurtling toward extreme climate change - follows a year of sobering weather extremes, including rapid ice loss in the Arctic as well as record heat waves and wildfires in Siberia and the US West.
2. On Monday, researchers at Europe's Copernicus Climate Change Service said last month was the hottest-ever November on record. "The year 2020 is on course to be one of the warmest on record, while wildfires, storms and droughts continue to wreak havoc," said Inger Andersen, UNEP's Executive Director.
3. The annual "emissions gap" report measures the gap between anticipated emissions and those consistent with limiting the global temperature rise this century as agreed in the 2015 Paris Agreement. Under the global climate pact, nations have committed to a long-term goal of limiting the average temperature rise to below 2 degrees Celsius above pre-industrial levels and to pursue efforts to limit it even further to 1.5C. Emissions have, however, grown by an average 1.4 percent per year since 2010, with a steeper increase of 2.6 percent last year due, partly due to a large increase in forest fires.



4. Total 2019 emissions of carbon dioxide equivalent (GtCO₂e) hit a new record of 59.1 gigatonnes. This year, there has been a temporary emissions dip as economies slowed due to the coronavirus pandemic. The resulting drop in travel, industrial activity and electricity generation are likely to work out at a 7% reduction in emissions, the report said. That translates to only a 0.01C reduction in global warming by 2050.
5. Green investment under government stimulus packages to pull economies out of the pandemic-induced slump could cut up to 25% off emissions predicted in 2030. Such packages could put emissions in 2030 at 44 GtCO₂e - within the range that gives a 66% chance of holding temperature rises to below 2C, but still insufficient to achieve the 1.5C goal.
6. The United Nations and Britain are holding an online event on Saturday to mark the fifth anniversary of the Paris Agreement, and governments are under pressure to come forward with tougher climate targets before the end of the year. A growing number of countries have committed to net zero emissions by mid-century but these need to be translated into strong near-term policies and action, the UNEP report said.
7. Temperature at Norway's Svalbard archipelago, about midway between the mainland and the North pole, hit a record high of 21.7 degrees Celsius, Norway's Meteorological Institute said. For the second day in a row, the archipelago registered 21.2 degrees Celsius of heat in the afternoon, just under the 21.3 degrees recorded in 1979, meteorologist Kristen Gislefoss told AFP.

Based on your understanding of the passage, answer ANY SIX out of the seven questions given below.

- (i) What can be the extreme climate change by the next year? [1]
- (ii) Who is Inger Anderson and what is his observation? [1]
- (iii) What are the provisions under the global climate pact? [1]
- (iv) What is known as 'emissions gap'? What are the possible emissions gap found as stated by Paris Agreement? [1]
- (v) The year 2019 saw an increase of emissions of carbon dioxide but 2020 saw a decline. Comment. [1]
- (vi) The growth in economy and development has an adverse effect on our climate. How far is this justified? [1]
- (vii) What should the nations do to achieve 1.5C goal limit of increase in global temperature rise? [1]

SECTION B – WRITING (8 Marks)

3. Your school, Bal Peeth Residential School, Bellary is planning to organize the Annual Sports Day in the school premises. Draft an invitation in not more than 50 words giving all the essential details. [3]
4. Last month Adventure Club Sunshine public School, Rampur organized a trek around Colbert National Park. During the eight hour trek the group lost its way but ultimately reached the Sunshine Point. On return you Asim / Abha the group leader made a report on the trek to the Principal. Write a report in 120-150 words [5]

OR

You are Shobha / Sushil from 56-A Block Saket Agara. Write a job application in about 120-150 words along with a personal resume in response to the following advertisement.

Wanted an experienced hockey coach having B.PED degree for our school. Apply to the Principal Agarsen public school, Agra by 15 march 20XX.

SECTION C – LITERATURE (18 Marks)

5. Attempt ANY FIVE of the six questions given below, within 40 words each. [2×5=10]
- (i) Why did the tramp sign the letter as Captain Von Stahle? [2]
 - (ii) Why did the prosecutor request the judge to postpone the trial? [2]
 - (iii) What spreads the pall of despondence over our dark spirits? How is it removed? [2]
 - (iv) In the poem “Aunt Jennifer’s Tiger” what is the contrast between the reality of Aunt’s life and her imagination? [2]
 - (v) Having got rid of his stink what problem did Roger Skunk face? [2]
 - (vi) What consolation did people give when they saw his acid burnt face? [2]
6. Answer ANY TWO of the following in about 120-150 words each. [4×2=8]
- (i) How does the metaphor of the rattrap serve to highlight the human predicament? [4]
 - (ii) What are the ordeals Aunt Jennifer is surrounded by? Why is it significant that the poet uses the word ringed? What are the meanings of the word ringed in the poem? [4]
 - (iii) What purpose did the question paper and correction slip serve? How did they help both the criminal and the Governor? [4]