

## ANSWER KEY

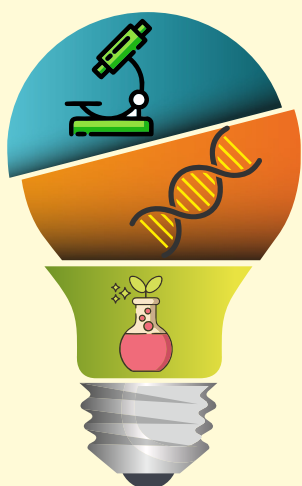
### DR. HOMI BHABHA BALVAIDNYANIK COMPETITION (DHBBC), 2019

**CLASS-9**

Que.	1	2	3	4	5	6	7	8	9	10
Ans.	B	C	A	A	A	B	D	D	C	A
Que.	11	12	13	14	15	16	17	18	19	20
Ans.	D	A	C	D	C	C	A	D	C	B
Que.	21	22	23	24	25	26	27	28	29	30
Ans.	C	C	D	D	C	A	D	B	A or B	D
Que.	31	32	33	34	35	36	37	38	39	40
Ans.	A	D	D	D or B	B	C	C	D	B	D
Que.	41	42	43	44	45	46	47	48	49	50
Ans.	C	B	C	C	C	B	D	A	B	A
Que.	51	52	53	54	55	56	57	58	59	60
Ans.	D	D	D	C	B	C	C	D	B	A
Que.	61	62	63	64	65	66	67	68	69	70
Ans.	A	B	A	D	D	C	C	D	C	C
Que.	71	72	73	74	75	76	77	78	79	80
Ans.	A	B	A	A	C	C	B	C	B	B
Que.	81	82	83	84	85	86	87	88	89	90
Ans.	C	A	D	D	C	B	D	C	D	B
Que.	91	92	93	94	95	96	97	98	99	100
Ans.	A	C	C	D	A	A	D	A	B	A

**ALLEN** Career Institute

announces



## ALLEN'S PRACTICAL TRAINING CAMP

for

**Dr. Homi Bhabha  
Balvaidnyanik Competition  
(DHBBC), Phase-II**

at

**MUMBAI, PUNE & NAGPUR**

### UNIQUE FEATURES

1. Intensive Theory Classes.
2. Training by Subject experts.
3. Exclusive Study Material targeting DHBBC Level-2.
4. Practical Training by the Experts in all the subjects.
5. Consistent Mentoring by Academic Experts.

For online registration visit: <https://workshop.allen.ac.in/wsdetails/wscontent/workshop.aspx?t=olympiad>

📞 For More Details Contact: +91-022-62423699 (Mumbai) | +91-20-67062000 (Pune) | +91-712-6663500 (Nagpur)

PNCf Head Office: "SAMANVAYA" C-210/2 Talwandi, Kota (Rajasthan) 324005 | Ph: 0744-2752600 | Email: [prenurture@allen.ac.in](mailto:prenurture@allen.ac.in) | Website: [www.allen.ac.in/pncf](http://www.allen.ac.in/pncf)