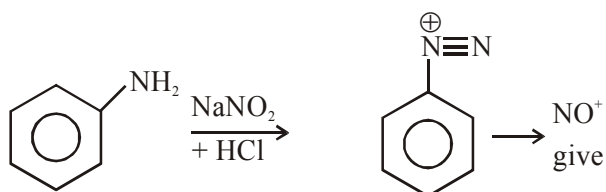
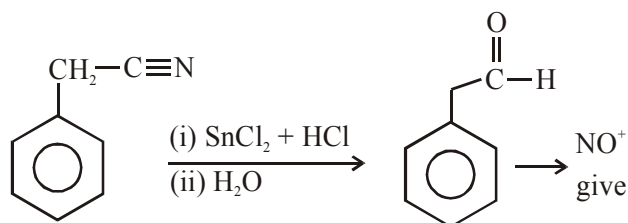
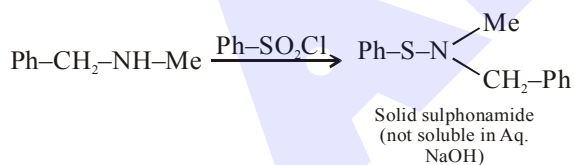
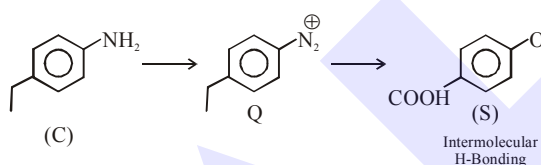
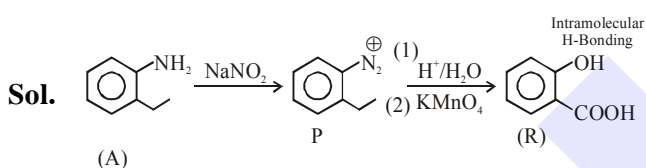


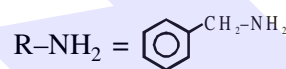
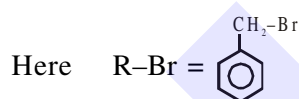
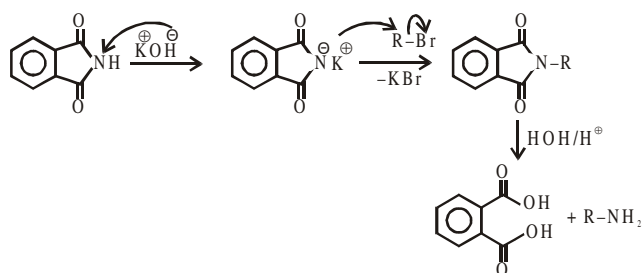
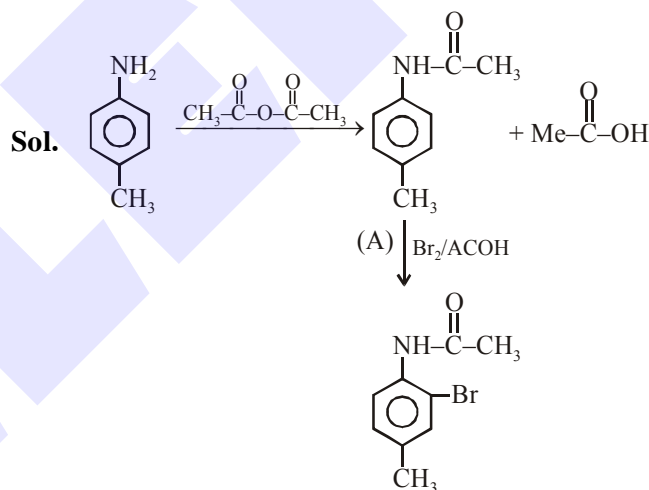


**SOLUTION****1. Official Ans. by NTA (2)**

**Sol.** Kjeldahl method is used for N estimation But not given by 'Diazo' compounds

**2. Official Ans. by NTA (2)****3. Official Ans. by NTA (1)**

**Sol.** Gabriel phthalimide synthesis is used for preparation of 1° Aliphatic amine

**4. NTA Ans. (1)****5. NTA Ans. (2)****Sol.**