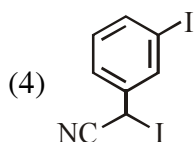
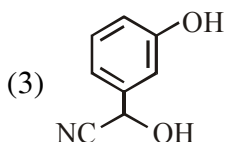
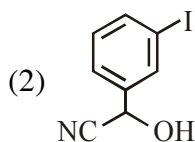
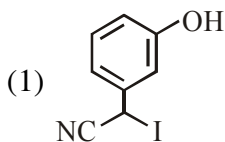
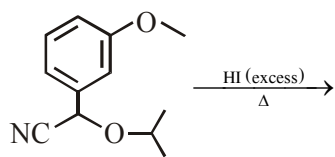
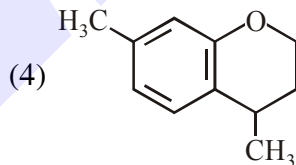
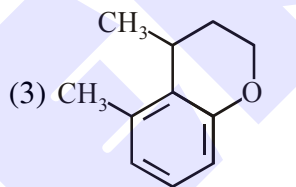
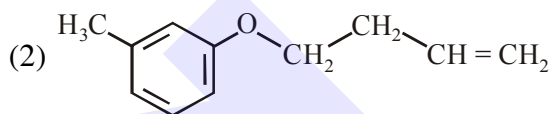
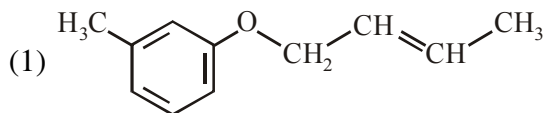
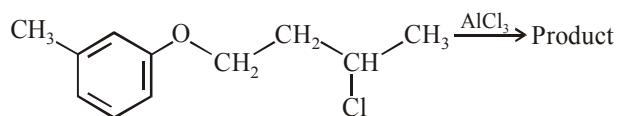


**ALCOHOL & ETHER**

1. The major product of the following reaction is :

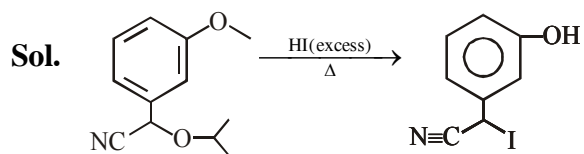


2. The major product obtained in the given reaction is :-



## SOLUTION

1. Ans. (1)



Phenolic  $-OH$  does not react with HI and benzylic  $-O-$  having  $-CN$  attached will react with HI by  $S_N2$  mechanism.

2. Ans. (4)

